

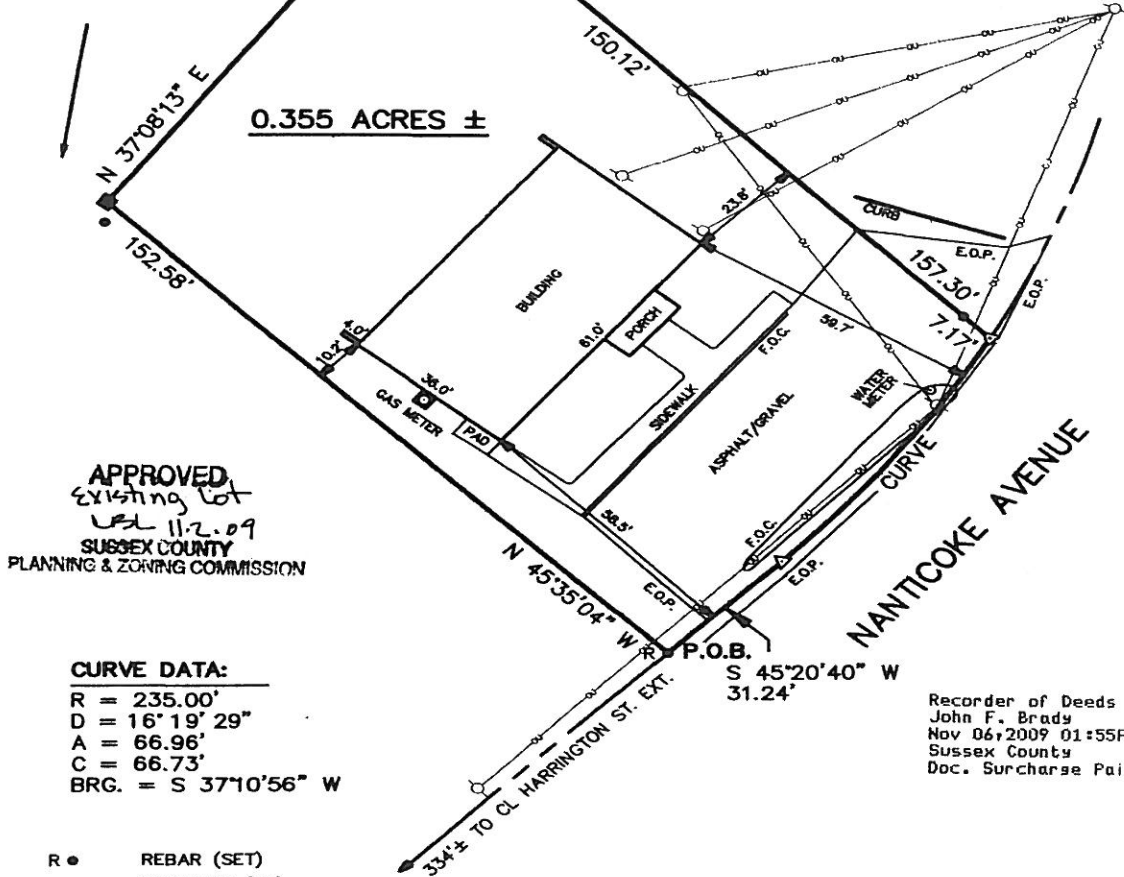
N/F PENINSULA OIL CO., INC.  
T.M.# 5-31-13-19  
703-880

**RECEIVED**

NOV 06 2009

ASSESSMENT DIVISION  
OF SUSSEX COUNTY

D.B. 2856-301



APPROVED  
Existing Lot  
11.2.09  
SUSSEX COUNTY  
PLANNING & ZONING COMMISSION

**CURVE DATA:**  
 R = 235.00'  
 D = 16° 19' 29"  
 A = 66.96'  
 C = 66.73'  
 BRG. = S 37°10'56" W

Recorder of Deeds  
John F. Brady  
Nov 06, 2009 01:55P  
Sussex County  
Doc. Surcharge Paid

- R ● REBAR (SET)
- IRON ROD (FD)
- PIPE (FD)
- CONC. MON. (FD)
- △ NAIL (SET)
- ⊕ UTILITY POLE

**BOUNDARY SURVEY PLAN  
 LANDS TO BE CONVEYED TO  
 WESTERN SUSSEX COUNTY  
 LODGE No. 9  
 FRATERNAL ORDER OF POLICE**

SEAFORD HUNDRED SUSSEX COUNTY  
 STATE OF DELAWARE  
 SURVEYED BY: **TEMPLE-SELLERS, INC.**

125 PENNSYLVANIA AVENUE  
 SEAFORD, DELAWARE 19973

AUGUST 31, 2009  
 SURVEY CLASS: SUBURBAN

SCALE: 1" = 30'  
 REF: 2856-301

*Stephen M. Sellers*  
 STEPHEN M. SELLERS, PLS 588